



DS457 FIXED MOUNT SCANNER

Accessory Guide



Customize Your Solution With A Full Range Of Accessories



We offer a choice of power supplies, battery packs, capacitors, USB adapters, mounts and holsters to fit every barcode scanning need. Enhance productivity for your workforce with accessories designed to complement and enhance scanner operation. Part numbers may vary by region.

Mounting Brackets

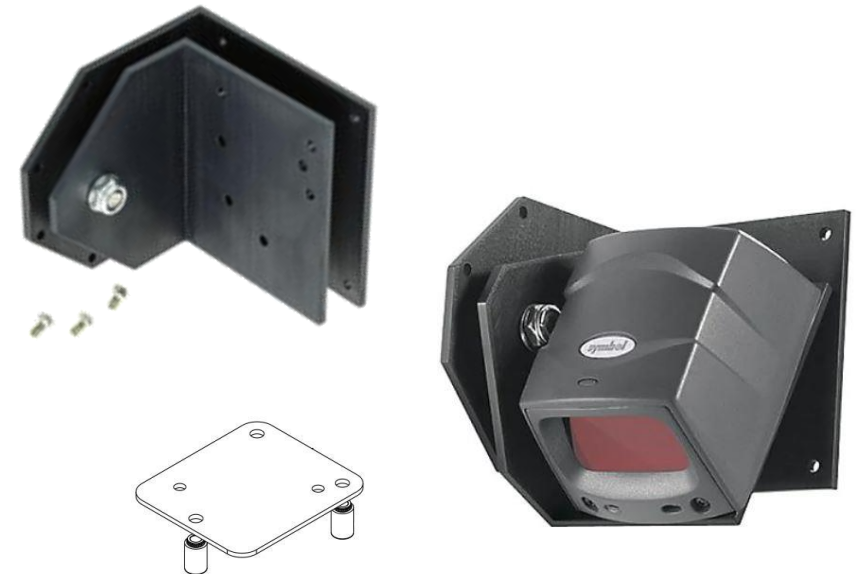
- 20° Wall/Counter Mounting Bracket

- Allows the scanner to be mounted horizontally (ie. tabletop) or vertically (ie. wall).
- The scanner can be rotated and slid in and out of the bracket.
- Part Number:
 - KT-145344-01
 - 20° Wall/Counter Mounting Bracket (Black)



- Adjustable Mounting Bracket

- Allows the scanner to be mounted horizontally (ie. tabletop) or vertically (ie. wall).
- The scanner is “locked” and cannot be removed from the bracket.
- DS457 applications must also use Adapter Plate Kit - KT-152342-01
- Part Numbers:
 - KT-65578-01R
 - Adjustable Mounting Bracket
 - KT-152342-01
 - Locking Mount - Plate for adapting DS457 to fit into holes for MS320x



KT-152342-01

Stands

- Gooseneck Stand
 - Standalone or mounted with screws
 - The scanner is “locked” and cannot be removed from the stand.
 - Part Number:
 - 20-60136-02R
 - Gooseneck Stand (Black)



Cables

CBL-58918-02	RS-232 Cable Assembly: 9-Pin Female Straight Host Connector, 6ft. Straight Cable – For General Purpose Fixed Mount Scanners
CBL-58918-03	RS-232 Cable Assembly: 9-Pin Female Straight Scanner Connector, 9ft. Coiled Cable – For General Purpose Fixed Mount Scanners
CBL-58926-04	USB Cable Assembly: 9-Pin Female Straight Scanner Connector, 6ft. Straight Cable – For General Purpose Fixed Mount Scanners
CBL-58926-05	USB Cable Assembly: 9-Pin Female Straight Scanner Connector, 18 Inch Straight Cable Optimal for Kiosk Integration – For General Purpose Fixed Mount Scanners
CBL-58926-06	USB Cable Assembly: 9-Pin Female Straight Scanner Connector, 9ft. Coiled Cable – For General Purpose Fixed Mount Scanners

25-58923-01R	9 Pin female to USB, Right angle connector. No Beeper or Trigger Jack - 6ft. Straight
25-13228-03R	RS-232 Cable Assembly: 9-Pin Female Straight Host Connector with Trigger Jack and Beeper, 6ft. Straight Cable – For General Purpose Fixed Mount Scanners
25-62186-03R	RS-232 Cable Assembly: 9-Pin Female Straight Host Connector, Converts TTL 5V Signal at Scanner to TRUE RS-232 +/- 12V Signal at Host – For General Purpose Fixed Mount Scanners
25-13227-03R	RS-232 Cable Assembly: 9-Pin Female Straight Host Connector with Trigger Jack, 6ft. Straight Cable – For General Purpose Fixed Mount Scanners
25-58925-02R	USB Cable Assembly: 9-Pin Female Straight Scanner Connector with Trigger Jack and Beeper, 6ft. Straight Cable – For General Purpose Fixed Mount Scanners
25-04950-01R	Push Button Trigger Cable, in Order for this Cable to Work you Must Purchase a Cable that has a Trigger Jack Attachment.

Power Supplies and Line Cords

PWR-WUA5V4W0IN	Level VI AC/DC Power Supply Wall Adapter, with Captive DC Cable and in Adapter Clip. AC Input: 100-240V, 0.2A. DC Output: 5.2V, 1.1A, 5.7W
PWR-WUA5V4W0CN	Level VI AC/DC Power Supply Wall Adapter, with Captive DC Cable and CN Adapter Clip. AC Input: 100-240V, 0.2A. DC Output: 5.2V, 1.1A, 5.7W
PWR-WUA5V4W0EU	Level VI AC/DC Power Supply Wall Adapter, with Captive DC Cable and EU, UK Adapter Clip. AC Input: 100-240V, 0.2A. DC Output: 5.2V, 1.1A, 5.7W
PWR-WUA5V4W0US	Level VI AC/DC Power Supply Wall Adapter, with Captive DC Cable and US Adapter Clip AC Input: 100-240V, 0.2A DC Output: 5.2V, 1.1A, 5.7W
23844-00-00R	AC Line Cord, 7.5ft. (2.3m) Long, Grounded, Three Wire. Associated Country: US



AG-DS457 Feb 19 2021

ZEBRA and the stylized Zebra head are trademarks of Zebra Technologies Corp., registered in many jurisdictions worldwide. All other trademarks are the property of their respective owners. ©2021 Zebra Technologies Corp. and/or its affiliates. All rights reserved.